

The Pima County Clerk of the Superior Court provides its own secure login certificate for the Attorney Registration web page. This certificate makes possible the encrypted transmission of data between your computer and our server. Normally these certificates are purchased from a third party vendor, but the Clerk's Office has created one of our own. Because of this, most internet browsers will issue a warning when visiting our site because it does not recognize the issuer (the Clerk's Office) of the certificate. In most circumstances, when you receive a warning on a certificate, you would not proceed to the page. However, in this case, it is okay to do so, and it will be necessary to do so in order to use the Attorney Registration site.

Following are instructions on how to navigate past the warnings with three popular browsers:

[Internet Explorer 6](#)

[Internet Explorer 7 & 8](#)

[Firefox](#)

## Internet Explorer 6

When attempting to access our site, the following warning may be received:

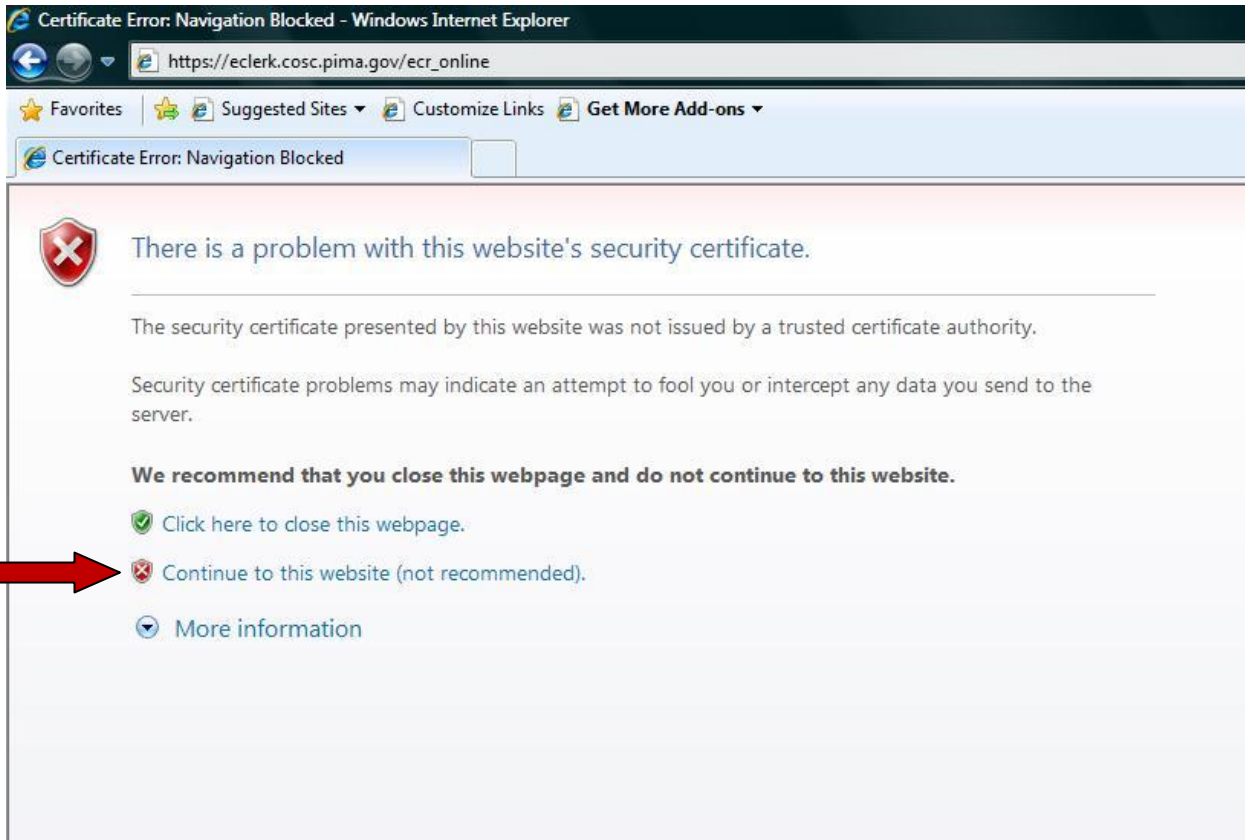


Click the "Yes" button and you will be taken to our site.

[Back](#)

# Internet Explorer 7 and 8

When attempting to access our site, the following page will appear:



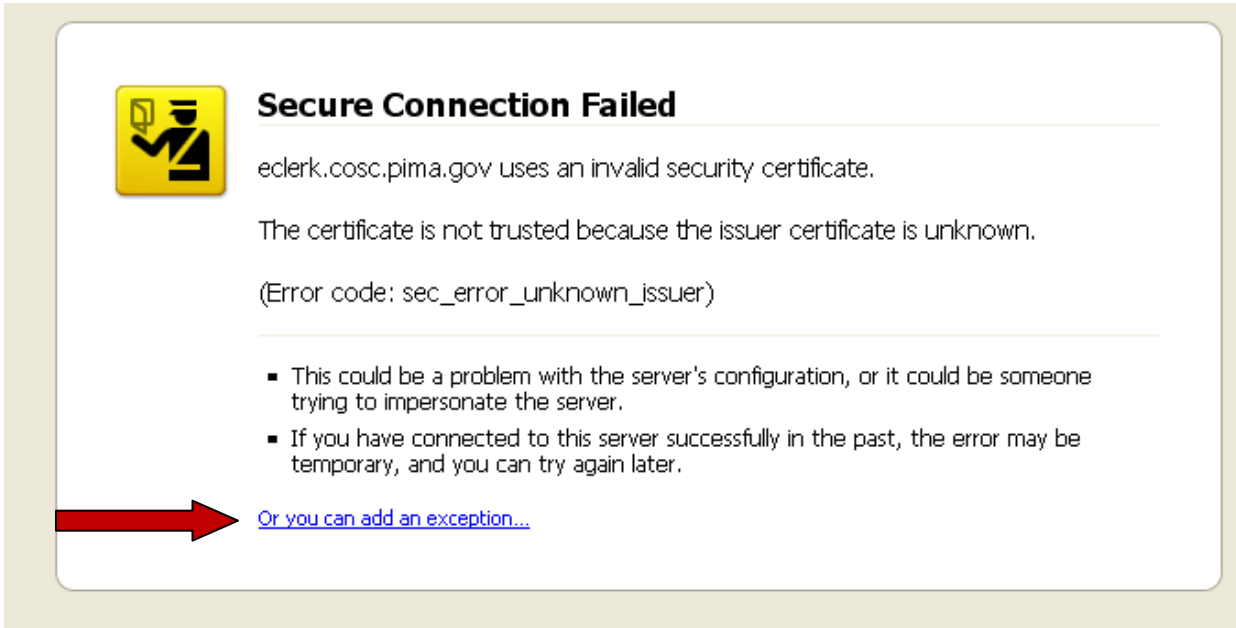
Click on the option, "Continue to this website (not recommended)" and you will be taken to our page.

[Back](#)

# Firefox

\*\* You should only have to perform this procedure one time. \*\*

When attempting to access our site, the following warning will appear:



**Secure Connection Failed**

eclerk.cosc.pima.gov uses an invalid security certificate.

The certificate is not trusted because the issuer certificate is unknown.

(Error code: sec\_error\_unknown\_issuer)

- This could be a problem with the server's configuration, or it could be someone trying to impersonate the server.
- If you have connected to this server successfully in the past, the error may be temporary, and you can try again later.

[Or you can add an exception...](#)

Click on the “Or you can add an exception” link at the bottom. The following should appear:



**Secure Connection Failed**

eclerk.cosc.pima.gov uses an invalid security certificate.

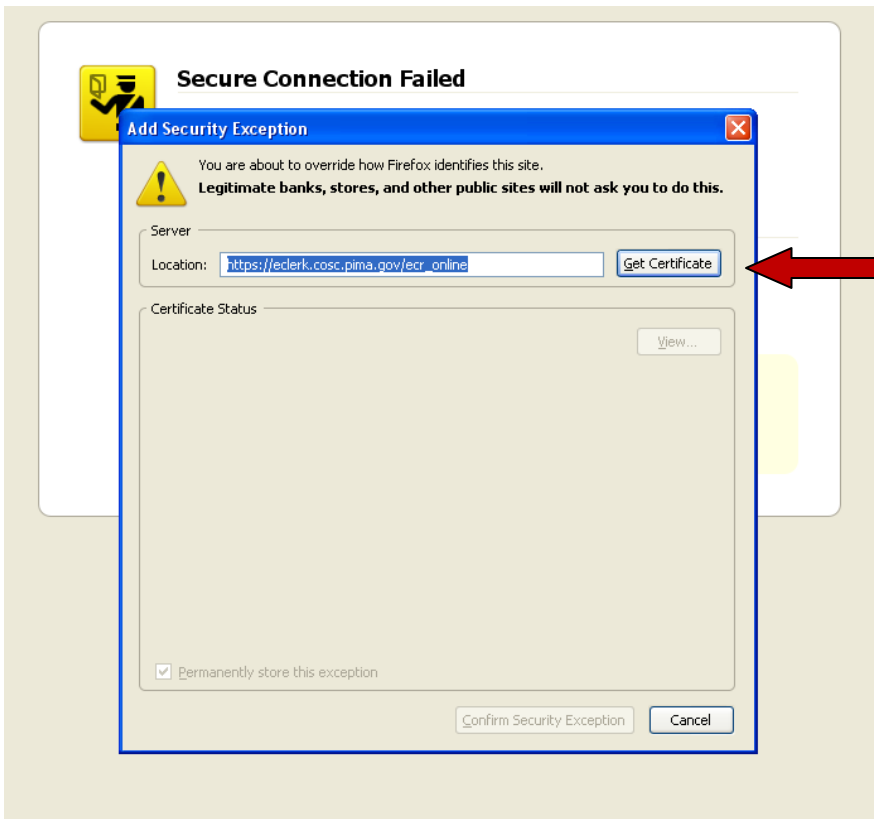
The certificate is not trusted because the issuer certificate is unknown.

(Error code: sec\_error\_unknown\_issuer)

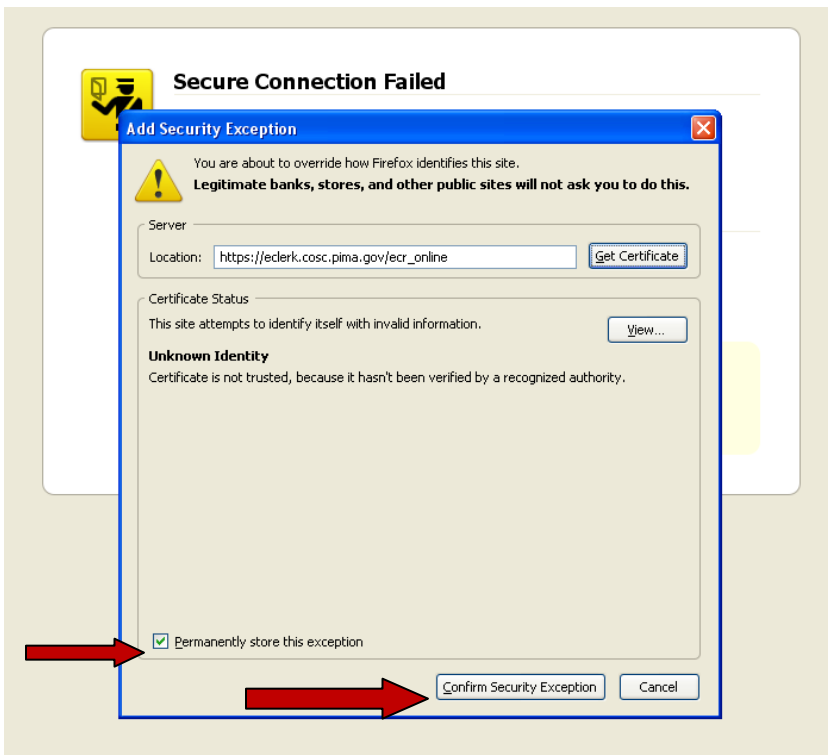
- This could be a problem with the server's configuration, or it could be someone trying to impersonate the server.
- If you have connected to this server successfully in the past, the error may be temporary, and you can try again later.

You should not add an exception if you are using an internet connection that you do not trust completely or if you are not used to seeing a warning for this server.

Click the “Add Exception” button. The following should appear:



Click the “Get Certificate” button. The following should appear:



Make sure the “Permanently store this exception” box is checked, then click the “Confirm Security Exception” button and you will be taken to our page.

[Back](#)